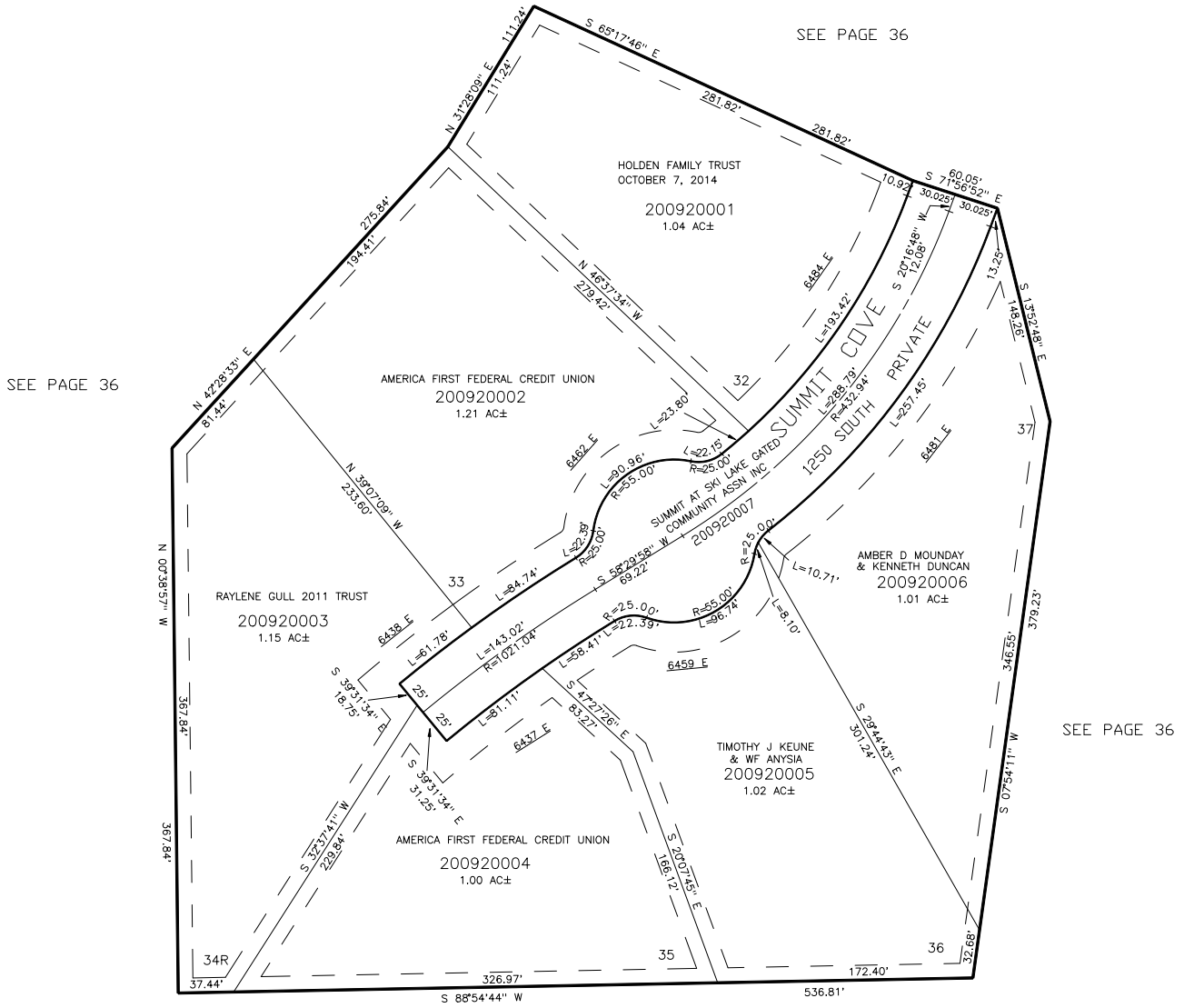


PART OF THE NW.1/4, OF SECTION 24, T.6N., R.1E., S.L.B. & M.  
**THE SUMMIT AT SKI LAKE No. 8**

IN WEBER COUNTY  
 SCALE 1" = 60'

TAXING UNIT: 318



SEE PAGE 36

SEE PAGE 36

SEE PAGE 36

SEE PAGE 36

10' UTILITY & DRAINAGE EASEMENTS EACH SIDE OF PROPERTY LINES AS INDICATED BY DASHED LINES EXCEPT AS OTHERWISE SHOWN.

FOR COMPLETE ENG DATA SEE ORIGINAL DEDICATION PLAT IN BOOK 61, PAGE 43 OF RECORDS.